

The Kathleen Cowl

This comfortable cowl is worked in a lace pattern using worsted weight wool. The pattern is well-defined but without compromising warmth.



Finished Size

Circumference: 20 inches
Height: 6 inches

Materials

- ❖ Approximately 125 yards worsted weight wool (shown here in Brown Sheep's Lanaloft Worsted Weight, colour: Precious Stones)
- ❖ US#8/5mm 16" circular needle
- ❖ Stitch markers
- ❖ Tapestry needle

Gauge

18.5 stitches and 24 rows = 4 inches in Twin Leaf pattern.

Note: Gauge isn't really crucial but, if you want a similar finished size, try to be close. If adjusting the number of pattern repeats to change the size, remember to increase in 23 st increments.

Notes

- ❖ (Optional) Markers can be placed every 23 stitches to separate the lace repeats.
- ❖ For a looser cowl cast on 115 sts instead of 92. This will increase the circumference by approximately 5 inches.

Abbreviations

BO	bind off
CO	cast on
K	knit
k2tog	knit two stitches together as one
PM	place marker
P	purl
Rnd	round
SKP	slip 1 stitch, knit one stitch, pass the slipped stitch over knitted stitch
YO	yarn over
*	starting point of repeat

Pattern

Cast on 92 stitches. Join in round and place marker.

- Row 1 *K8, k2tog, yo, k1, p1, k1, yo, SKP, k8. Repeat from * to end of round.
- Row 2 *K7, k2tog, k2, yo, p1, yo, k2, SKP, k7. Repeat from * to end of round.
- Row 3 *K6, k2tog, k1, yo, k2, p1, k2, yo, k1, SKP, k6. Repeat from * to end of round.
- Row 4 *K5, k2tog, k3, yo, k1, p1, k1, yo, k3, SKP, k5. Repeat from * to end of round.
- Row 5 *K4, k2tog, k2, yo, k3, p1, k3, yo, k2, SKP, k4. Repeat from * to end of round.
- Row 6 *K3, k2tog, k4, yo, k2, p1, k2, yo, k4, SKP, k3. Repeat from * to end of round.
- Row 7 *K2, k2tog, k3, yo, k4, p1, k4, yo, k3, SKP, k2. Repeat from * to end of round.
- Row 8 *K1, k2tog, k5, yo, k3, p1, k3, yo, k5, SKP, k1. Repeat from * to end of round.
- Row 9 *K2tog, k4, yo, k5, p1, k5, yo, k4, SKP. Repeat from * to end of round.
- Row 10-12 *K11, p1, k11. Repeat from * to end of round.

Work rows 1 through 12 once more.

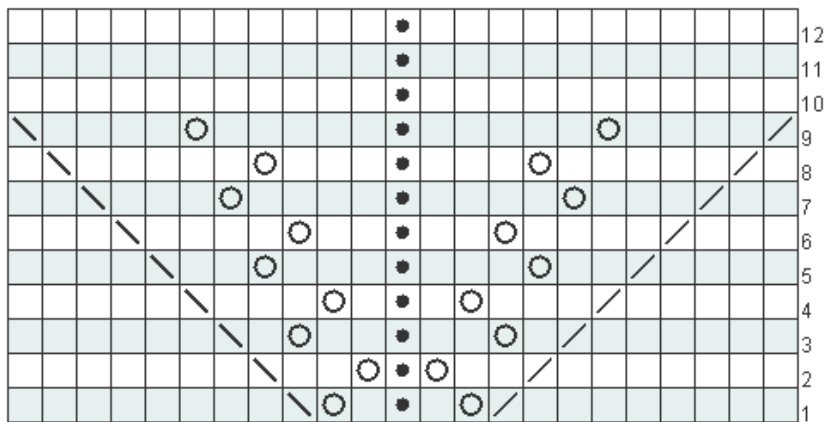
Deleted: twice

Work rows 1 through 11.






Bind off in pattern of row 12.

Weave in ends and block.

Twin Leaf Lace



Key

-  Knit 2 together
-  Yarn over
-  Slip one stitch, knit one stitch, pass slipped stitch over
-  Purl
-  Knit

Contact

I am available to answer any questions with regards to this pattern.
Please email me at fontas@comcast.net

Copyright 2008 Jen Jensen

This pattern, including text and images, is an original peavine design. You may print and use this pattern only for your personal use. Reproduction, distribution and sale of this pattern in any form is prohibited. All rights reserved.



